



# GAT MONTHLY MEMBERSHIP PROGRESS REPORT

Results as of: 1/31/2023

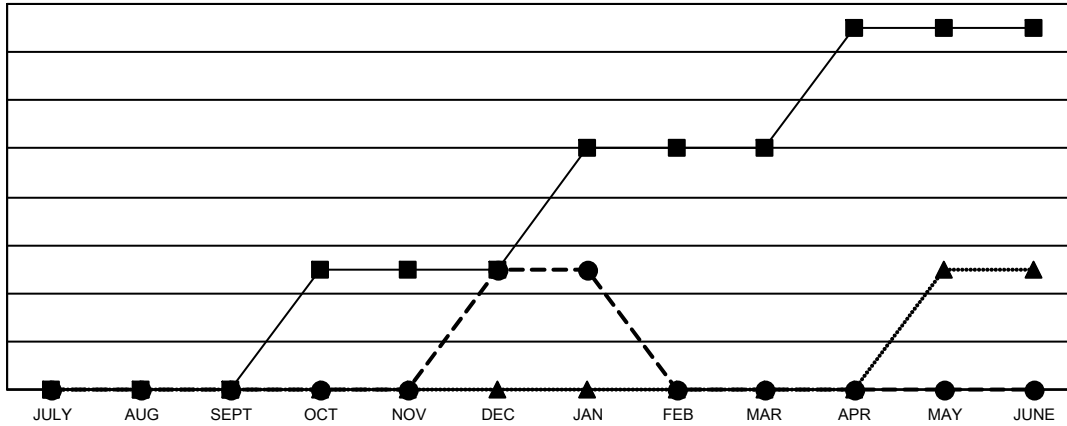
Multiple District 32

LOCATION: SOUTH CAROLINA

Clubs			
RESULTS FOR 2022-2023			
QUARTER	NEW CLUB GOAL	NEW CLUBS	DROPPED CLUBS
JULY/AUG/SEPT	0	0	1
OCT/NOV/DEC	1	1	1
JAN/FEB/MAR	1	0	0
APR/MAY/JUNE	1	0	0

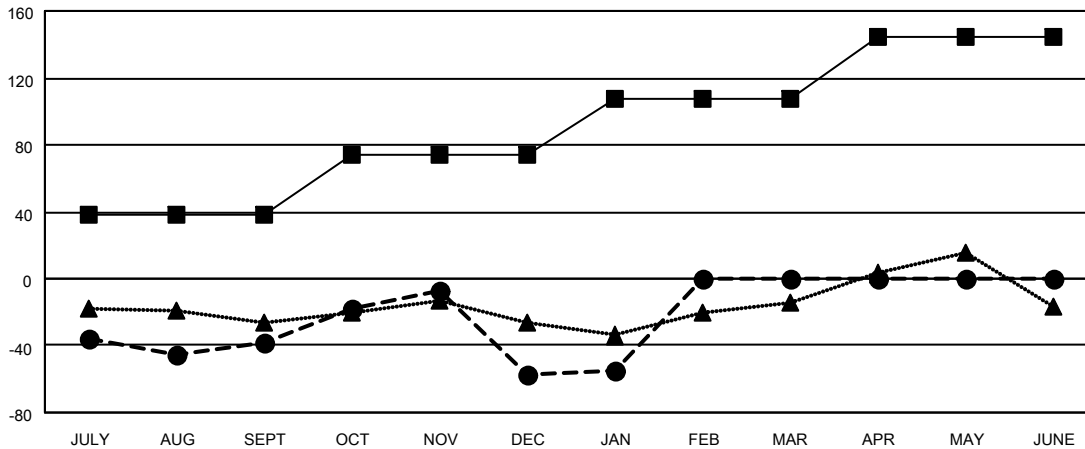
Members			
RESULTS FOR 2022-2023			
QUARTER	MEMBER GROWTH NET GOAL	MEMBER GROWTH ACTUAL	DROPPED MEMBERS ACTUAL (including transfers)
JULY/AUG/SEPT	38	93	122
OCT/NOV/DEC	36	123	135
JAN/FEB/MAR	34	26	23
APR/MAY/JUNE	36	0	0

GOALS AND ACTUAL NEW CLUBS CUMULATIVE



- - CURRENT YEAR GOALS FOR NEW CLUBS
- - CURRENT YEAR ACTUAL NEW CLUBS
- ▲ - LAST YEAR ACTUAL NEW CLUBS

GOALS AND ACTUAL MEMBERS CUMULATIVE



- - MEMBER GROWTH NET GOAL
- - MEMBER GROWTH ACTUAL
- ▲ - LAST YEAR MEMBERSHIP ACTUAL

<b>DROPPED CLUBS: 2</b>	56 CLUBS OF 123 ADDED 1 OR MORE NEW MEMBERS	<u>GENDER DISTRIBUTION</u>	
<u>DROPPED MEMBERS</u>		MALE	1,970 (64.82%)
DECEASED	40	FEMALE	1,069 (35.18%)
CLUB CANCELLED	13	NON BINARY	0 (0.00%)
OTHER	227	PREFER NOT TO ANSWER	0 (0.00%)
<b>TOTAL</b>	<b>280</b>	TOTAL FAMILY UNIT MEMBERS 609	
<a href="#">CLICK HERE FOR CUMULATIVE MEMBERSHIP DATA</a>		FAMILY MEMBERS PAYING HALF DUES 310	